

# BASI SKI LEVEL 2 SEASON PROGRAM 2024

A CONCISE PACK OF  
WHAT YOU NEED TO  
KNOW FOR OUR SKI  
INSTRUCTOR L2 IN  
ARINSAL, ANDORRA

EARN UP TO  
£1000  
WITH OUR NEW  
WORK OPTION

UPPER/LOWER BODY  
SEPARATION.

HEAD LOOKING  
IN DIRECTION OF TRAVEL

HANDS WHERE YOU  
CAN SEE THEM.

PRESSURE OVER  
OUTSIDE SKI.

ALL 3 JOINTS FLEXED  
(KNEES/ANKLES/HIPS)

# WELCOME

Snowsports Coach is a sister company of Snowboard Coach who have been delivering BASI training and exams for over 15 years - 9 winters ago we started a program that offers our great value Instructor training programs to our ski clients.

This program is aimed at skiers stepping up to the BASI 2. Maybe you're fed up with the rat race and need a change of career or you fancy doing a season away and want to get something out of it or you simply want a change of lifestyle. The common goal is gaining the ability to do something we love and there is no better way than being able to ski every day.

Our Level 2 program means you have to be a Level 1 instructor before embarking on this program. Our unique approach is to help you complete this level 1 in the UK during the months of April to November at one of our partner venues. We work with Tamworth Snow Dome as part of their new Instructor Program. In doing it this way we believe it focuses everyone on what's needed to become an instructor far earlier than the traditional "gap" programs and also gives you a full 10 weeks in resort to get the riding and teaching up to and beyond a level 2 standard. Taking our optional extra of the early arrival will give you up to an extra 3 weeks in resort to ski, do extra shadowing or just enjoy yourself.

Not only do you receive training from the high qualified BASI instructors and trainers but you also get to experience what it's like to be part of the winter scene in a thriving village. Something that will be invaluable as an instructor in the years to come.

## WHERE IS THE COURSE?

All of our winter courses take place in the Pal/Arinsal/Arcalis region of Andorra. Andorra has been a popular destination for UK skiers since the mid 90's and has always been a great value destination offering everything from a great park and pistes in Arinsal to some great tree skiing in Pal, to freeriding in Arcalis.

Andorra has a duty free tax status so is great value for money meaning you can go out and enjoy yourself without breaking the bank. We have written a resort guide for various snowsport magazines, so please email us if you would like a copy of this.

## WHO CAN ATTEND?

The course is open to all level 1 qualified BASI instructors\*

You **WILL NEED** to be a fully paid up member of BASI and have done your level 1 course before arriving in resort with us. We will help you with this so please keep reading.

During the winter you will need to log an additional 35 shadowing hours. This can be done in resort. However, it is a [strong recommendation](#) that you have as many of these extra 35 hours done by the time you arrive in resort. This takes the pressure of trying to get them ALL done in resort as well as attending the training program.

\* Candidates from other training organisations are welcome. Please contact us for more information

# PRE-REQUISITES

## WHAT DO I NEED TO DO?

To attend our winter program you will need to complete the following to become a BASI Level 1 Instructor. Obviously we will help you all the way with this. Current approximate prices are indicated in brackets.

### **BASI LEVEL 1\* (£600 IN THE UK):**

We will organise this with you and take you through the BASI Level 1 Instructor Course. This is a 4-day course which is the first level of the BASI qualification system. For more information on the level one please contact us.

### **FIRST AID (APPROX £110):**

A separate 2 day First Aid course is needed. These take place all the indoor centres. Contact us for more information and recommendations.

### **SAFEGUARDING CHILDREN MODULE - FREE:**

This course can be done on-line through the BASI website once you are a registered BASI member and have completed the level 1 course.

### **SNOW SCHOOL SHADOWING (FREE FOR SNOWSPORTS COACH CLIENTS):**

After the Level 1 course and before our Level 2 program you must complete as many of the first 35 hours of lesson shadowing as possible. The more you do in the UK the less you will need to do in resort.

### **CRIMINAL RECORD: UPDATE:**

Please note that this is **no longer needed** so is NOT a requirement to be an instructor.

Please note that accommodation for any UK course is NOT included in the price.

# WHAT'S THE COST?

## WHAT'S IT GOING TO COST?

As ever we are keeping it as cost effective as possible so that becoming a BASI Level 2 Ski instructor isn't going to cost you a small fortune. We know we are the cheapest season BASI course provider out there, our standard programme is longer at nearly 13 weeks and not just 10 weeks!

We have 2 accommodation options. Self catering apartments and our new hotel inclusive option.

## SELF CATERING OPTION:

**3 MONTHS SEASON: JAN TO MARCH**

**£6,695**

**Please note:** This does not include the cost of the Level 1. Candidates will pay our partner centres direct and in addition to our Level 2 program – please request our BASI Level 1 info pack for more information regarding this.

## NEW INCLUSIVE OPTION

**3 MONTHS SEASON: JAN TO MARCH**

Our new hotel option is proving a really popular choice. It includes a full breakfast every morning and a 3 course evening meal EVERY evening of your stay with us. Your room will also be cleaned and sheets and towels changed every 3 days. The hotel rooms are all en-suite and have tea and coffee making facilities and TV's and wi-fi.

Basically you only need to spend money on beers and food up the hill if you feel you need it.

The 3\* hotel is located a short 5 min walk from the gondola as well.

**£7,995**

There are other optional extra's that can be added onto this such as BASI Coaching courses, Mountain Safety courses, Snowboard Level 1 and BASI Adaptive Level 1 & 2 courses.

More details can be found later on in this info pack.

# WHAT'S IN IT

## WHAT DOES THIS INCLUDE?

Over the years we have learned to include the things you need and take out the things you don't need so we can keep the course fee as low as we possibly can.

Our package for the 2024 season will include the following:

- All in resort accommodation with bills included
- Airport transfers on the specified start and finish dates
- Pal/Arinsal/Arcalis lift pass valid every day of the season
- All skiing/teaching training costs
- BASI Ski Instructor level 2 course and exam fee
- Mountain shadowing experience
- Stay up to the 31st March 2024
- Employment opportunities for future seasons at the Arinsal mountain school
- Discount on private sessions with us in UK and in resort prior to the exams if you require extra input.
- Discount on Ski (& Snowboard equipment) from our sponsors of up to 35% prior to the course.
- Wristband giving you "locals" discount in selected bars in resort. No high French prices - beers here are just 2 euro a pint!!
- Special Snowsports Coach T-Shirt on arrival.
- **Inclusive Option:** Includes full breakfast every morning and 3 course evening meal every night.
- **Inclusive Option:** Room cleaning and sheet and towel changes every day.

Ash and the Snowsports/Snowboard Coach crew will be on hand **ALL** season. We will be around for advice or to chat about any issues you feel you need to talk to us about.

## WHAT'S NOT INCLUDED:

The Level 2 course DOES NOT include the following:

- Flights
- Early Arrival on 15th December 2023
- Food (Inclusive includes breakfast and evening meal)
- Drinks
- Travel Insurance
- Spending money
- Laundry service (payable extra locally)



# OTHER INFORMATION

## START & FINISH DATES:

The dates of our Level 2 program are detailed below. We also have an "Early Arrival" option for those who want to spend more of the season with us. More details later in the pack.

Standard Arrival: Sat 6<sup>th</sup> January 2024  
Early Arrival: Fri 15<sup>th</sup> December 2023

Standard Departure: Sun 31<sup>st</sup> March 2024

## AIRPORT TRANSFERS:

These are included in the price. The arrival date must be one of the above. The departure date is flexible and can be booked anytime up to the 30th March for those not taking the extended stay.

Once your transfers have been booked then **ANY** change of date/time of your transfer will incur a £10 admin charge imposed on us by the company we use.

More information regarding the transfers will be supplied when booking onto the program.

Transfer time to Andorra is around 3.5 hours.

## FLIGHTS:

Barcelona El Prat is the easiest airport for Andorra. There are many airlines from all over the UK that fly there.

Other airports can be accommodated by prior arrangement such as Toulouse but we always recommend Barcelona.

We recommend landing in Barcelona (or your respective airport) no later than 2pm in the afternoon. This means that with the transfer times taken into account, you get into resort early evening and have plenty of time for a drink and a bite to eat on the first night.

The same will go for return flights back to the UK. A Later departure in the afternoon means you don't have to leave Arinsal too early.

Again more information regarding flight times will be sent to you upon booking onto the program.

## LIFT PASSES:

All lift passes are valid for every day of the course including weekends. They are valid for Arinsal, Pal and Arcalis regions known as the Valls Nord

Your lift pass will be waiting for you when you arrive.

Once you have your lift pass it is your responsibility and Snowsports Coach cannot be held responsible for extra charges incurred due to loss or theft of lift passes.

## MONEY IN RESORT:

There are plenty of cash points in and around town, but be aware that your bank may charge you for withdrawing money. Credit cards are widely used in town but cash is always preferred in the local bars.

There is no actual bank facility to physically change money in Arinsal. If you intend to bring cash please change this in the UK prior to coming out.

**\* PLEASE NOTE: The currency in Andorra is still the EURO \***



# OPTIONAL EXTRA'S

## EARLY ARRIVAL OPTION:

### EARLY ARRIVAL - 15<sup>TH</sup> DECEMBER:

The cost for arriving early on the 15th December will be a special £750. This is to give you chance to see what it's like to spend a lively Christmas and New Year in a winter resort.

It also means you will be experiencing a longer season away and you will arrive over 3 weeks before our standard season arrival date.

\*Price for this option will be more if taking the inclusive hotel option - please email us to discuss this option.

## OTHER BASI COURSES:

### BASI 5 DAY COACHING EXAM:

If numbers allow, we can arrange the BASI 4 day Coach exam. The course fee will be approximately £459 and can be paid when course numbers are confirmed.

### BASI ADAPTIVE L1 & L2 EXAM:

Needs no introduction but will allow you to teach people with learning difficulties and disabilities. A growing area in the snowsports world and a great addition to the CV.

### BASI SNOWBOARD LEVEL 1:

2nd Discipline requirement and will be run at the end of the season and training will be available through the season. This is numbers dependant as BASI require a minimum of 4 people for this to run

### BASI MOUNTAIN SAFETY:

Awesome course and could save your life - so why not do it while you are here and save money as well.

# NEW WORK OPTION

## NEW FOR 2024 - WORK AND EARN!

For those who want to earn from the season, there will be an opportunity to work for the mountain snow school during the busy Feb half term and GET PAID!!

So not only will you be clocking up extra hours towards your level 2, you will also be able to gain valuable, real teaching experience and earn some extra spending money.

This is totally unique with our course here in Arinsal. You will have special permission and insurance from the mountain school to use your level 1 to teach beginners.

The work and earn is optional and you do not have to work if you prefer to just work on your skiing instead.

You can also just use the half term to ski and shadow.



Ryan from our 2023 season course, styling the mountain school uniform during Feb half term. (clocking nearly 40 hours of lessons)

# OUR WRISTBANDS

## OUR "LOCAL" WRISTBAND:

Over the past few seasons we have had other people not on our courses trying to get our special discount in bars and cafes in town and up the mountain. Because of this we introduced our own Wristband. Yes we know it says Snowboard Coach, but we are all the same ;)

Our wristband tells all the bar staff in our favourite places that you are with us and that you get locals seasonaires price straight away. Some of these places even offer us better prices, that even the locals don't get....

We are just trying to make you feel part of the great local scene here in Arinsal from day one.

The idea sounds cheesy but it works!

It also saves you guys asking about discount - as soon as the staff see it they will know.

The band itself is fully waterproof and shower proof so is fine to wear every day.

This band is only available for you and for what you buy. It wont cover any other friends and family that travel separately ie not with us. That's why everyone on our courses get this band and no-one else.



# WHERE IT WORKS!

## POLAR BAR:

These guys look after us all winter and offer discount on their daily specials only to us.....This is our favourite mountain cafe in Arinsal. We eat there every day as its too cheap not to. With our wristband you will too.....Here is what we get:

### 3 COURSE MEAL OF THE DAY ONLY 10.50 EURO:

- Starter
- Main meal (with Pasta option)
- Dessert

### PLATE/PASTA OF THE DAY FOR 7.90 EURO:

- Main meal (with Pasta option) and soft drink

### SANDWICH CHOICE FOR ONLY 6.90 EURO:

- Bacon/Cheese/French omelette "Bocadillo"
- Coffee or soft drink

Anything else on the menu you will get a discount of 20% should you not wish to take these specials.

The Polar bar is located up the mountain on the middle floor of the complex when you get off the gondola and is where we start and finish most days.

**CISCO'S BAR:** A favourite of ours over the years of being here. They do us an amazing 2 Euro pints ALL THE TIME. Free nachos and chili in Apres ski as well.

**EL MOLÍ:** Specials during apres, local prices on all drinks.

**FUGAZZETA:** Our local coffee and chilled bar run by our good friend Joaquin. Daily deals and local prices on all drinks and food.

**DERBY DELI & IRISH PUB:** A fast take away style deli up the hill that gives us great discounts on food - plus local prices on all drinks in the bar in the village.

**360 EATERY & BAR:** Burger and a beer deals and local prices on all drinks.

A full list of discounts will be emailed prior to the course.

There are of course other bars in the village but we like to promote the ones we drink and eat in...and in turn allow us to save you money on your time with us.



# LEVEL 2 SCHEDULE

## TRAINING SCHEDULE

Once everyone has arrived we will have a course debrief and a Q&A session the following morning.

**Constant input and coaching does not work, you need time to practice!!** This is why our coaching routine is set up this way below.

### EARLY ARRIVALS: FREE SKI WEEKS

Arriving early? Then spend the start of the winter skiing, relaxing, getting to know the locals and generally enjoying the start of your season away. You can also use this time to gain those extra valuable shadowing hours.

### ARRIVAL WEEK: SKI PERFORMANCE COURSE

There will be 3 training sessions during the first week running 9.30-12.30. The idea behind this week is to re-affirm and refresh the fundamental's learned on the Level 1 Instructor course and how it all applies to the mountain. It includes coaching on piste performance, steep slopes and variable snow. Also part of the week is general orientation around the mountain so you get to see what the resort has to offer.

### FOLLOWING WEEKS: SKI TRAINING TIME

During this period you will receive 3 training sessions per week. These are taken by the Snowsports Coach team who are all high end BASI Instructors and also work for Vallnord. On top of this you'll receive regular video feedback sessions to see how your skiing is progressing. You will also practice delivering teaching sessions and shadow the other Vallnord ski school instructors to help build up your teaching confidence. You will get all the help you need to push your riding and teaching ability to the level 2 standard.

### FEBRUARY HALF TERM:

There will be no training this week. But as mentioned earlier in the pack, you have the chance to take part in the work and earn program. By the end of this week every candidate must have 70 hours of shadowing/work signed off and sent to the BASI office.

### AFTER THE CHAOS: MORE TRAINING TIME

You'll know everything you need to know about your skiing by now and what you need to work on to pass the level 2. You'll be making comments on your own video runs, skiing the entire mountain very well and gearing yourself up for the final push in the last 2 weeks. You will also be confident in teaching the central theme.

### THE BASI LEVEL 2 EXAM....

This will run from Tuesday 5th to Thursday 14th March. The Level 2 is now an 8 day exam. These dates still allow a weekend off in between.

This is about putting together all that you have learnt during your time with us....This is the BASI L2 exam.

### AFTER THE EXAMS: GETTING READY TO LEAVE

After the exam, you will have 2 weeks to enjoy the March sun and snow and then unfortunately it will be time to think about going home. You will be packing up and leaving Arinsal for the UK on the 31st March

**PLEASE REMEMBER:** Outside this program, it's all about practice and getting up the hill and working on your feedback. The more effort you put in during the season the more you will benefit during the exams.

## PAYMENT SCHEDULE

Booking is really simple once you have decided to join us on the Level 2 program. We run a free payment option spread out over the Summer and into Autumn/winter.

- Payment for the BASI Level 1 is paid direct to the centre where the level 1 is taking place and will need to be paid in full when booking. This can be done on credit card.
- If booking a place in April to July - a £500 deposit is all that's needed to secure a place. Then an interim payment of £2,000 + half of extras booked is needed by the 31<sup>st</sup> August 2023. The balance (including any extras) needs to be settled no later than 30<sup>th</sup> October 2023.
- If paying in August - A deposit of £1,500 is needed to secure a place on the course. Then an interim payment of £2,000 + half of extras booked is needed by the 15<sup>th</sup> Oct 2023 with the balance settled before 30th November.
- Anyone booking in September/October 2023 will need a £2,500 deposit and the balance settled no later than 30<sup>th</sup> November 2024.

Once we have received your deposit payment we will send you the transfer information PDF and you can book your flights around this. We will obviously be here to help you in regards to flights and anything else you need to know along the way.



# THE SC APARTMENTS

## WHAT'S THE ACCOMMODATION LIKE?

The apartments are located a short 2 minutes walk to the top chair lift in the village. So a great location. The accommodation is either 2 bedroom or 3 bedroom. Each apartment has a big lounge/diner with TV for relaxing and kitchens for cooking. Depending on the size you either have 1 or 2 bathrooms with showers.

We do not cram people into our apartments like other companies...you will not be 4 to a room! Accommodation will be 2 per bedroom maximum. If it's a 2 bed apartment then it will sleep 4 people max. 3 Bedroom apartments will sleep 6 max. Couples are obviously allocated a room together. Bedrooms have under bed storage or wardrobes. Being honest the only time you will spend in the bedroom is when you're sleeping!

Single rooms are possible but will incur a significant extra cost due to the high cost of accommodation in resort.

Wi-Fi is available throughout each apartment and in every single bar in town and of course up the hill.

## DEPOSIT

A £250 damage deposit is payable on top of the course fee by every candidate. If the apartment is left **as it was found** then this will be returned after course, once the apartments have been inspected. Any damages, cleaning, breakages etc...will be billed at the cost to put right and this will be split between everyone in the apartment. You will also be responsible for your own keys. If you lose them, you will need to replace them at your own cost.

## BILLS:

All bills are included. This includes water, heating and electric. As skiers using the mountain we should be concerned about global warming and energy saving. Just because the bills are included doesn't mean you can forget about them. Simple things like turning the heating and lighting off when you go out will make a big difference. There will be rules in place to help combat this and will be discussed prior to the course.

**SHEETS, CLEANING & WASHING:** 2 sets of bed sheets are provided and can be used/washed on a rotation basis. It does not include a personal laundry service. But you can pay to have all your washing done at a local laundrette.

**FRIENDS STAYING POLICY:** Only 1 friend can stay in the apartment for a max of 7 days - as long as it is cleared with Snowsports Coach and the rest of the people you share with. The cost per week is £150 payable in advance to Snowsports Coach.

If you have more than 2 friends, then we can arrange a discounted package for them in a hotel in the village and include lift pass and all the other Snowsports Coach benefits.

If you have been on holiday in France then you will be pleasantly surprised with where you stay, if however you are used to staying at the Ritz in 5\* accommodation, then we can arrange this but the program will cost you considerably more ;).





# THE INCLUSIVE HOTEL

## WHAT'S THE HOTEL LIKE?

We use a 3\* hotel located a 5-6 min walk from the main gondola in Arinsal. It's actually one of the hotels we use for our weekly riding courses - So it's not some cheapo motel ;).

The hotel has an awesome breakfast and a 3 course meal EVERY night. So all your food is taken care of.

You will be allocated a double or triple room (depending on course numbers) which will be cleaned every day and sheets and towels changed every day too. The room has tea and coffee making facilities and TV and wifi throughout. All rooms are en-suite with showers and baths. Basically everything you want.

Single rooms are available but charges will obviously be higher. Please get in touch if you are thinking of this.

The hotel has a bar and area's for relaxing as well as a 24 hour reception for any problems/questions.

## DEPOSIT

A £200 damage deposit is payable on top of the course fee by every candidate. Any damages, cleaning, breakages etc...will be billed at the cost to put right.

## BILLS:

Obviously again, all bills and taxes are included.

**SHEETS, CLEANING & WASHING:** Your room will be cleaned every day and sheets and towels changed. It does not include a personal laundry service. But you can pay to have all your washing done at a local laundrette.

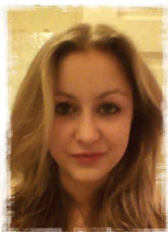
**FRIENDS STAYING POLICY:** If you have friends that want to come and visit, then we can arrange a discounted package for them in the same hotel and include lift pass and all the other SSC benefits, so they feel like part of the crew and can drink and eat with our discounts. It goes without saying that friends are not allowed to stay with you in the hotel room!

**BREAKFAST AND EVENING MEAL:** As mentioned this option includes an all you can eat breakfast with unlimited juice, tea, coffee. The evening meal is 3 course with a starter, followed by a choice of 3 main courses and ending with a choice of 3 desserts. You won't go hungry that's for sure.



# TESTIMONIALS

Over the years of doing these course we have developed a great coaching family and we all keep in contact with many of our previous candidates, many of them are now living and teaching all over the world. We have included some feedback from the guys to help you make your mind up.



The Level 2 season course Snowsports Coach provided was a fantastic experience, I honestly can not recommend it enough.....

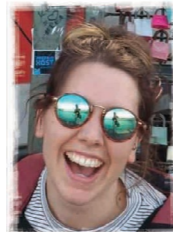
The training sessions were perfect, there was ample opportunity to shadow the ski school and gain first hand experience of teaching in a mountain environment, which was invaluable.

The benefit of having 3 different trainers for the season enables alternative teaching styles for individuals, therefore sets you up in the best position possible for the exam.

Arinal itself is perfect for the assessment criteria. I found it really useful having this available to me in such close proximity. The village is also super friendly and welcoming.

Snowsports Coach really pushed my skiing, well beyond what I thought it would, not only did I feel ready for the exam but I now feel well prepared for next season and any other courses I take in the future. Thanks guys!

Emily Wood



I trained for my BASI Level 2 ski exam in Arinsal and can safely say it was one of the best decisions I have made in my life.

The whole process from booking on, to arriving in Arinsal for my first season, to sitting a two week exam was simple with Ash's help. The training I received was incredible, and took me from being a pretty bog standard skier to someone who was fully ready to sit their level 2 in a matter of weeks.

Arinsal is an amazing resort, especially for your first season, it's full of fantastic people, has a fab apres scene and having 2 mountains to ski is a real bonus. I had an amazing three months, met some awesome people and gained a new qualification.

**UPDATE:** Since doing the course, I've spent seasons working in Japan, New Zealand and Canada. All starting from doing this course.

Olivia Wells



It was almost four years to the day since I'd successfully taken my Snowboard Level 1 exam with Ash (I subsequently did the Snowboard Level 2 Season with Snowboard Coach in Andorra).

I also knew I wanted to ski, so I sent Ash the following message

"Do you think you could turn an old guy with grey in his beard into a Level 2 skier"?

I got my answer and I trained for the season with Snowsports Coach for exactly that and didn't regret a minute of it.

With a small group size and three trainers sharing their expertise, the coaching was again, second to none. I was pushed hard but my skiing and my knowledge improved way beyond what I expected. I'm happy to say I'm now a Level 2 Ski Instructor as well as a Level 2 Snowboard Instructor.

**UPDATE:** I've worked the past 3 seasons teaching in the mountains in Jasna with a snow school who were specifically looking for dual qualified Instructors. Thanks to Ash for all the help and support - I couldn't have done it without you and team at Snowsports Coach & Snowboard Coach

Graham Hopkins



Having been fortunate enough to have visited ski resorts around the world, I have found myself continuing to return to Arinsal, thus making it my first choice of resorts to do a season, train and take my Basi Alpine level 2 exam.

Arinsal is a great resort - great pistes, fantastic off piste and apres to match and an atmosphere akin to a genuinely friendly mountain town - none of the pomp and pageantry that is associated with some of the better known resorts.

Ash was my first point of call when I started to explore options for my BASI level 2. After knowledgeably taking me through what was involved, what the course contained and expectations, he ended by saying that the groups get on like a big ski/snowboard family. It sounded corny at the time, but I have to admit its true and I have made some great friends.

Being able to train in an environment that was challenging in terms of conditions and terrain, and then be able to kick back with a great supportive team at the end - was second to none.

If you are looking for top class instruction, to meet like minded people both on and off the slope, and to come away with a qualification and a great new snow family - then look no further than Ash and Snowsports Coach in Arinsal.

**UPDATE:** I ended up working full time for the Vallnord School in Arinsal for 2 seasons - It just proves how much I really love this place. Thanks to the SSC crew ;)

Jim Palmer



# ARINSAL CREW



# YOUR RESPONSIBILITIES

We ask every candidate to be professional and respectful at all times not only to your trainers but also to your peers - the people you will be living with for the season. Understanding other people's needs and being able to manage them as a team is a big part of being an instructor. You will also get to know a lot of people in Arinsal and will be known as part of the local crew. It's a small friendly town so creating the right impression is paramount. Remember we are not just looking at you're skiing skills but also how you would represent BASI as a working instructor in a resort environment.

The courses are not to be taken lightly and you will be pushed hard with your skiing and your ski teaching but you will learn loads of things that you would never even think of and you WILL ski the mountain better than you ever have done

We will be asking all candidates to be punctual for the training sessions. They are not compulsory but missing them WILL put you behind in the training program. Not turning up because you went out the night before would not be too good for your own development.

**The course is not a guaranteed pass.** We will give you all the tools and feedback you will need to pass the course and the video feedback sessions will be invaluable. We are not in control of how much effort you put it...that bit is up to you. We encourage you to use the time in resort wisely. The more you practice around our training program and take charge of your own skiing and learning the more chance you have of success.



# A BIT MORE ABOUT US

Snowsports Coach is a sister company of Snowboard Coach. It was started to offer the same high end training to our ever growing ski clients who are looking for a cost effective program for obtaining their Level 2 Ski instructor qualification for under the £10k

We hold the highest accreditation from the ISIA which is the worldwide governing body for snowsport instructors as well as the ISTD level... We also have extensive experience in training instructors - this is crucial and different to teaching recreational skiing. This is why you are training with us.

This isn't to show off or trying to prove how good we are, it's to assure you that you are in good hands and are getting what you pay for. Teaching is our full time and year round profession.

## A MESSAGE FROM ASH OWNER OF SNOWSPORTS COACH

We are really excited with our ski program. This is our 6th season of providing a ski training season for lthe amazing price of £6,695....and its been received very well AND we've had 100% pass rate in the past 3 years!!!

At the end of the day it's all about enjoying what we do and I wouldn't be here today if I didn't. I've spent 30 years of my life involved in Snowsports and 25 years teaching this sport that I love. I've been an examiner for BASI for over 20 years so we know how to get you ready for an exam.....

Thanks for enquiring about the Level 2 Training Program, We hope you can join us out in Arinsal and look forward to seeing you next winter.

## APPROVED BASI PARTNER

We are a FULLY APPROVED BASI PARTNER.

This is a new accreditation that BASI are only issuing to approved companies with a proven track record of delivering a quality BASI product.

This means that we have been through a rigorous quality control process assessing everything from our training and delivery methods to our course structure and organisation. We have surpassed this stringent criteria with flying colours. We have worked hard to achieve this and are proud to carry this accreditation.

When looking for an Instructor Course package this is the accreditation you need to look out for to ensure you are getting the training you expect.



Snowboard Coach & Snowsports Coach has earned the highest levels attainable from the following Worldwide Snowsports Governing bodies:



And is supported by:



Please read our terms and conditions on the following page...

# TERMS AND CONDITIONS

Snowboard/Snowsports Coach are trading names under All Mountain Training SLU - an Andorran registered company - from herein referred to as "Us" and "We". You will be referred to as the "client". All applicable under Andorran Law.

Terms and Conditions for our "Season" Level 2 Programme

1. The client must have fulfilled all of the course prerequisites as detailed in our course info pack. The client must also be safe and medically sound to travel and to be in a winter resort and have appropriate insurance cover for Andorra. We will not accept any clients travelling against medical advice and you must state this in the booking form you receive from Us. We can not be held responsible for costs incurred for failure to declare this.

2. The client will only be accepted and secured provided:  
a) The application is accompanied by a non-refundable or transferable initial deposit.  
b) The booking confirmation is signed and returned.  
c) The client unconditionally accepts these terms and conditions of booking when confirming via email that a place on the course is required.

3. The second instalment of £2,000 + half of any extras requested must be received by Us by the appropriate date paid to our Andorran Account in GBP Sterling or Euro at prevailing rate that will be given at the time of booking confirmation.

4. The remaining balance must be received in full by Us by the 31st October 2023, paid to our Andorran Account in GBP Sterling/Euro (at our confirmed rate) except when:

- Clients enrolling in September, October 2022 will be required to pay a £2,500 deposit and the full balance to be settled by 15th November 2023.
- Clients enrolling in November or December 2023 will be required to pay the full balance.

4a. If payments are not made within 7 days of these deadlines then We reserve the right to re-allocate you're place without refund.

5. All changes to bookings must be received in writing by email.

6. Other BASI Courses offered require a minimum number of clients to run. If minimum numbers are not met these courses will be cancelled and course fee returned to the client by BASI. In this instance we can not be held liable for secondary loss/ expenses due to course cancellation.

7. All clients must be insured for our courses. We advise every student to buy insurance **AS SOON AS YOU CONFIRM YOUR BOOKING WITH US**. Please do not wait until the week before you travel.

8. Cancellation: in the event of cancellation by the client the deposit paid **WILL NOT BE REFUNDABLE/TRANSFERABLE**.

If paid in full then the balance minus deposit will be refunded except when:

a) Client cancels within 6 weeks of the course start date – **NO REFUND WILL BE GIVEN**.

9. We strongly recommend that all clients embarking upon ANY of our courses take appropriate insurance which covers both cancellation and curtailment and course reimbursement/cover.

10. Proof of insurance or similar will be required prior to attending the course.

11. We will refund appropriate monies (pro rata) if the decision is made by Us to cancel all or part of the training program.

12. No monies will be refunded by Us in the event of an injury sustained whilst participating in ANY of our courses, where injury leads to missed sessions, curtailment of the course; then in this instance it is necessary to make an insurance claim. We will provide the necessary receipts.

13. If the venue of the course is adversely affected by snow, weather, force majeure or **any other circumstances beyond our control** that cause cancellation of any/all parts of our course and package offered - **NO REFUND WILL BE GIVEN**. Again We insist on a suitable insurance policy as detailed in point 7.

14. In the event of the above in paragraph 13: You, the client, agree that We cannot be held responsible for refunds.

15. We reserve the right to refuse training to any client who, in the opinion of the Us or the BASI trainer is unsuitable for snow sport instructor training.

16. Any client found under the influence of alcohol or drugs during course contact time (ie a training session or shadowing time) will be removed from the course **permanently** and with **NO REFUND**.

17. In the event that the client is refused training on the basis of paragraph 12, 13, 15 & 16 You agree that **no monies will be refunded**.

18. In the event of any arrest or infraction between the client with the local Police in relation to drink, drugs or ANY circumstance that see's YOU the client arrested/detained/ removed from the country. We will not be held responsible. We will stand by the decision of the enforcing agency. Again **no monies will be refunded**.

19. In the event of point 18; Our limited responsibility is to ensure that the client is given contact with the British Embassy.

20. You the client agree that except for death or personal injury arising through the negligence of Us or BASI, We or BASI shall not be liable for any loss or damage arising whether in respect of death, bodily injury, illness suffered or contracted, loss, costs, damages or expenses incurred for anything on our program.

21. It is the client's responsibility to ensure that all accommodation, transport and any other facilities provided or organised by Us, is treated with respect and appropriate consideration as if their own.

22. We will not be responsible for any damage caused by a client. You, the client, will be held liable for any costs incurred in such a way and will agree to settle any costs immediately to 'make good' any and all damage caused.

23. As an applicant to be a client on a course or package organised by Us and BASI, whether applying by telephone, email or letter you agree to abide by these conditions when confirming your booking with us, regardless of whether you have signed and returned the requested booking form.



snowsports™  
coach.co.uk

**FOR MORE INFO ON  
SNOWSPORTS COACH VISIT**

**WWW.SNOWSPORTSCOACH.CO.UK**

**INFO@SNOWSPORTSCOACH.CO.UK**



**FOLLOW US ON INSTAGRAM  
SNOWSPORTSCOACH**



**FOLLOW US ON TWITTER  
SNOWSPORTSCOACH**



**FOLLOW US ON FACEBOOK  
SNOWSPORTSCOACH**